

User Manual

FMS Schedule Explorer Essentials

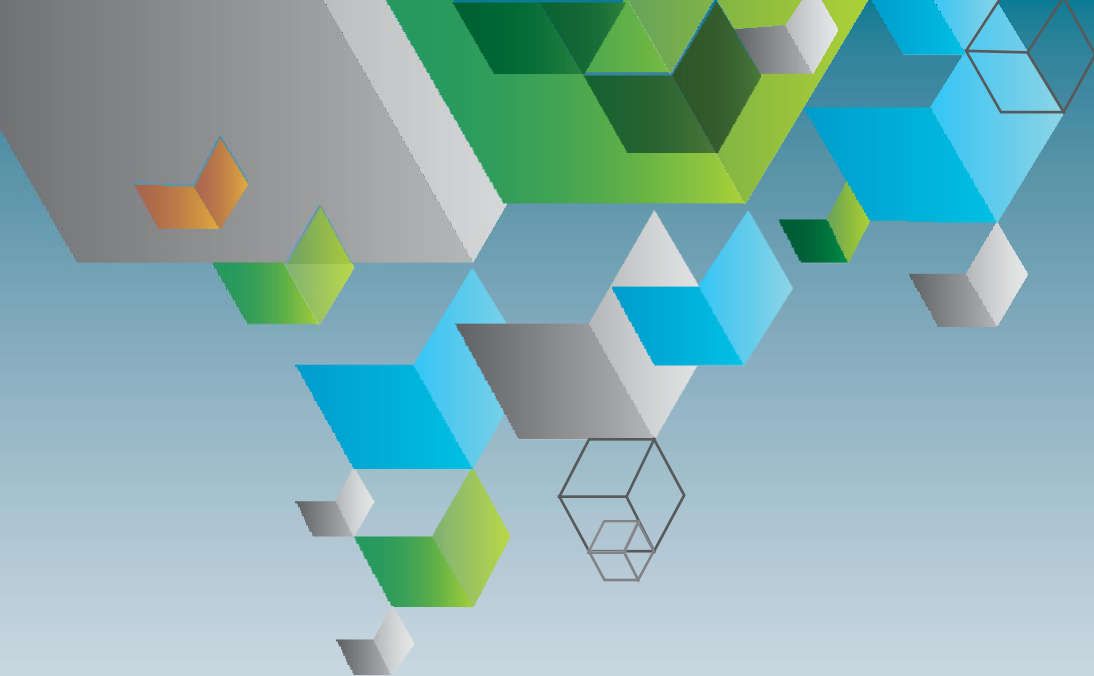
One click solution to parse, store and process FMS schedule settings and configuration data

NEOCODE



FMS Schedule
Explorer Essentials

NEOCODE



Contents

1. Introduction	1
1.1 How it Works	1
1.2 Acronyms	1
2. Overview	2
3. Getting Started.....	3
3.1 Set-up Considerations	3
3.2 User Access Considerations	3
3.3 Accessing the App	3
3.4 System Organization & Navigation	3
4. Using the FMS Schedules Explorer Essentials app	4
5. Troubleshooting & Support	8
5.1 Error or Warning Messages	8
5.2 Special Considerations	8
5.3 Support.....	8
6. References	9



Notice of Copyright

The FMS Schedule Explorer Essentials Application is designed and developed exclusively by Neo Code Software Ltd. and is protected by all applicable international Copyright Laws.

The Application Notes for the FMS Schedule Explorer Essentials Application are produced by Neo Code Software Ltd. and protected by all applicable international Copyright Laws.

The FileMaker file called `schedule_parser.fmp12`, referred to in this documentation, that demonstrates how FileMaker interacts with the FMS Schedule Explorer Essentials Application, is designed and developed exclusively by Neo Code Software Ltd. and is protected by all applicable international Copyright Laws.

Every effort has been made for the scope of this document to be comprehensive and for the information contained herein to be accurate.

Neo Code Software Ltd. is not responsible for any omissions, errors or updates to the information in this document.

© 2020 Neo Code Software Ltd. All rights reserved.

FMS Schedule Explorer Essentials

NEO **C**ODE



Revision History

Version	Date	Changes
1.0	2020-03-04	FMS Schedule Explorer Essentials FileMaker Application Released



1. Introduction

This User Manual (UM) provides the information necessary for **FileMaker Admin users** to effectively utilize the FMS Schedule Explorer Essentials app. This document outlines the step by step process which needs to be followed in order to make the effective use of this app.

FMS Schedule Explorer Essentials is a customized app developed in FileMaker Pro. It is compatible to run with FileMaker version 18 and above on Windows and Mac OS. You don't need to worry about installing any additional plugins to run the app.

FMS Schedule Explorer Essentials app follows a very simple workflow with high flexibility and accuracy, this app is extremely helpful for any user who manages [FileMaker server](#) on Windows or Mac OS. It loads and parses the FileMaker Server schedule settings data stored in the dbs_config.xml file.

1.1 How it Works:

You may come across a situation where FMS Schedules may get lost due to the corruption of schedule settings (dbs_config.xml) file. In this problematic scenario, there is no chance you can go back and restore all the previously setup FMS schedules. FMS Schedule Explorer Essentials takes care of all that work for you behind the scenes and saves your precious time.

To address this issue, you can simply take a backed up schedules settings (dbs_config.xml) file and insert it into the FMS Schedule Explorer Essentials app. On one click, the app parses all the schedule's settings data from the inserted dbs_config.xml file and import it in a well-managed database allowing you to go through the previously setup FMS schedules. By following few simple steps, you will be able to access the important settings and configuration data for all the previously setup FMS schedules at a glance.

The ideal way to utilize FMS Schedule Explorer Essentials app is to execute it locally on your FileMaker server(s). You can keep a separate copy of FMS Schedule Explorer Essentials app on each of your FileMaker servers and since, all your previous FMS settings and configuration settings are already present on the FileMaker server. It's easy to locate the schedule settings (dbs_config.xml) file and insert it in the FMS Schedule Explorer Essentials app to load and process all FMS schedule settings data. On the other hand, you can always use this app on any of your FileMaker client computers by inserting any backed up schedule settings (dbs_config.xml) file.

1.2 Acronyms

Acronym	Literal Translation
FMS	FileMaker Server
App	Application



2. Application Overview

FMS Schedule Explorer Essentials is designed and developed in [FileMaker Pro](#) version 18 and above on Windows and Mac OS. The best part is, you don't need to worry about installing any additional plugins to run the app; it can be executed on FileMaker client or directly on FileMaker server computers.

- FMS Schedule Explorer Essentials is flexible to run in both client/server and local environment. You can simply copy the downloaded FileMaker (schedule_parser.fmp12) solution to multiple FileMaker or Client computers and insert a backed up schedule settings (dbs_config.xml) file in each app instance without affecting any other FileMaker admin user's work.
- FMS Schedule Explorer Essentials is loaded with a fully functional graphical user interface which allows the FileMaker admin user to easily access all the exciting features. This app cannot be used as a background process or as a scheduled job.
- **Supported Operating Systems:** Windows and Mac OS.
- FMS Schedule Explorer Essentials is currently not supported to work on FileMaker Go and FileMaker Cloud environment.



3. Getting Started

3.1 Set-up Considerations

1. **FileMaker Pro 18 (required):** Please make sure FileMaker Pro 18 is installed on your computer before running this app.
2. **FileMaker Server Access (required):** You will need access to FileMaker server for taking backup of schedule settings dbs_config.xml file.

3.2 User Access Considerations

Any user with a minimum or no knowledge about FileMaker can use this app, but this app is extremely useful for FileMaker Server admin users.

3.3 Accessing the App

Use following credentials to login to the app.

- Username: demo
- Password: demo

3.4 System Organization & Navigation

There are the two main navigation buttons added on left top corner of both the screens.



Home button navigates user to the startup screen of the app.

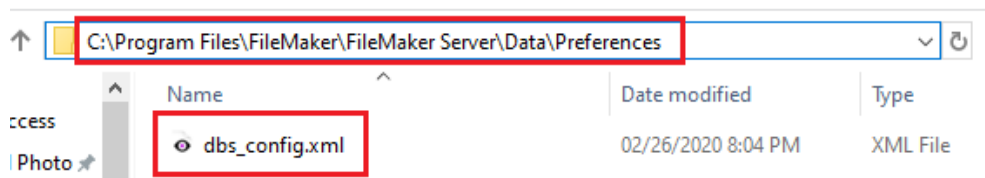


The arrow button navigates user to the setting tab on the schedule details database screen.

4. Using the FMS Schedules Explorer Essentials app

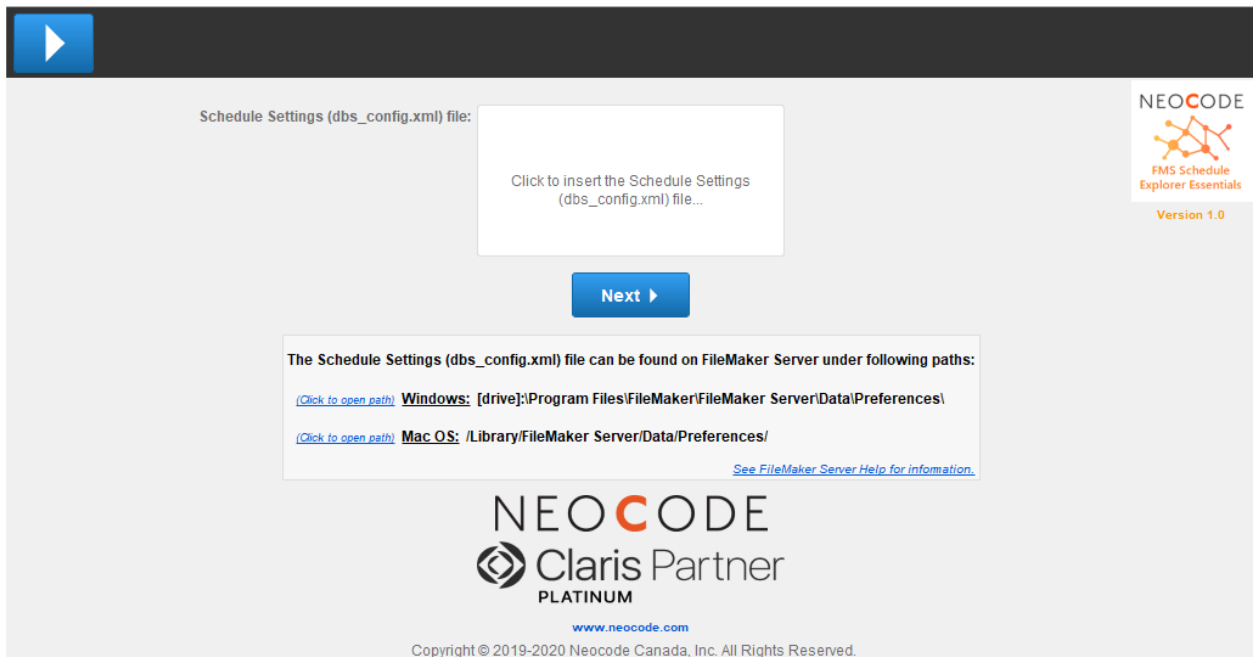
5 simple steps to load schedule settings:

1. Login to the FileMaker Server.
2. Locate the dbs_config.xml file and take a backup copy of dbs_config.xml file.



Note: Mac OS path for dbs_config.xml file is **“/Library/FileMaker Server/Data/Preferences”**

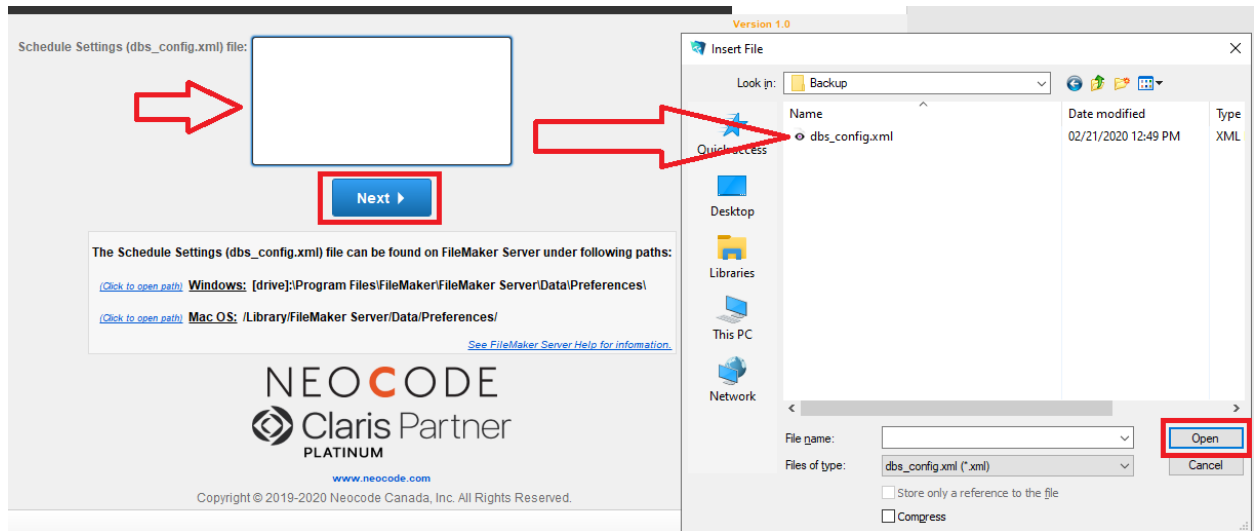
3. [Download](#) and Open FMS Schedule Explorer Essentials app (schedule_parser.fmp12) in FileMaker Pro 18.



FMS Schedule Explorer Essentials

NEOCODE

4. On Home screen, click to insert the dbx_config.xml you backed up in above step 2.



5. Click on **Next** to parse and load the schedule settings configuration data. The imported schedule settings data is divided into 3 tabs as explained below.
- Setting Tab:** This screen has two sections showing Basic Settings and OS scripts schedule settings data for the **Schedule Name FMS**. You can click on forward and backward arrow buttons to navigate between different FileMaker server schedules.



Database Setting Repeat

Basic Settings: ← → OS Scripts:

Schedule Type	FileMaker Script
Schedule Name	FMS
Database	
FileMaker Script	
Start Date	2019-10-04 00:00:00
End Date	00:00:00
Script Parameter	None
Script Timeout(minutes)	0
End at Timeout	Disabled
Frequency	Daily
Schedule Status(Enabled bar)	Enabled
Last Run	2020-02-13 00:00:00
Next Run	2020-02-14 00:00:00

Preceding System Script	
Preceding System Script Parameter	
Following System Script	
Following System Script Parameter	
System Script User	

Import Data - Click on Import Data to insert a new dbs_config.xml file.

Process Data - Click on Process Data to parse and load the dbs_config.xml file's

← →

- ii. **Database Tab:** The database tab shows the raw data parsed and inserted into the app.



Database
Setting
Repeat

FileMaker Server XML Data

Index: 1
Name: FMS
LastRun: 2020-02-13 00:00:00
NextRun: 2020-02-14 00:00:00
CreationDate: 2019-10-04 14:25:00
StartDate: 2019-10-04 00:00:00
EndDate: 00:00:00
EnableEndDate: 0
RunOnceDate:
DailyDays: 1
RunNow: 0
RepeatTask: 0
RepeatFrequency: 10
RepeatInterval: 1
LastError: 0
FromTarget:
BackupTarget: filewin:/C:/Program
OSScript:
MessageText:
Enabled: 1
Target: 2
LiveBackup: 1

TaskType: 1
FreqType: 2
DaysOfTheWeek: 0
Deleted: 0
SendEmail: 0
EmailAddresses:
FMScriptName:
FMScriptAccount:
FMScriptPassword:
FMScriptParam:
Verify: 0
MaxBackups: 7
OSScript2:
UseOSScript: 0
UseOSScript2: 0
Timeout: 0
AutoAbort: 0
Clone: 0
OSScriptParam:
OSScriptParam2:
RunOSScriptsAsUser: 0
OSScriptAccount:
OSScriptPassword:

iii. **Repeat tab:** The repeat tab shows the schedule interval details.

Database
Setting
Repeat

Alarm Interval

Schedule Name: FMS
Frequency: Daily
Start Date: 2019-10-04 00:00:00
Time:
At: 00:00:00
None
Repeat Every: Minutes
Run Every: 1 Days
Sun Mon Tue Wed Thu Fri Sat
End Date: 00:00:00

FMS Schedule Explorer Essentials

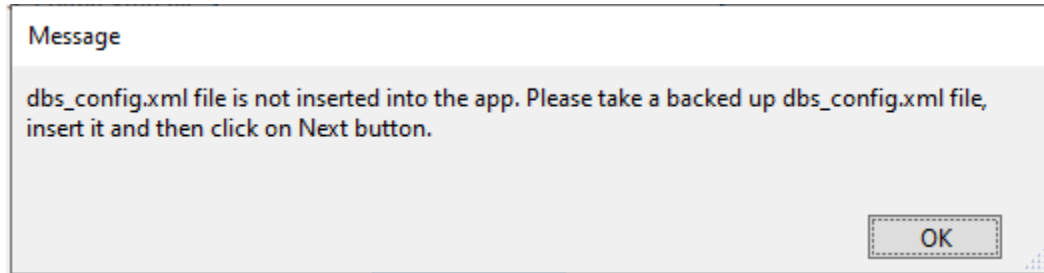
NEOCODE



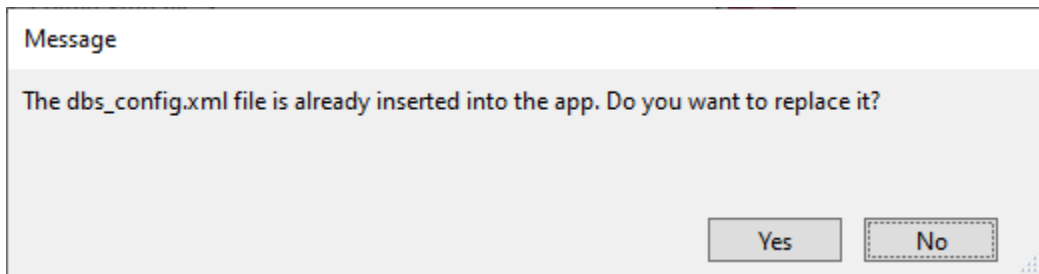
5. Troubleshooting & Support

5.1 Error or Warning Messages

1. Refer the default paths mentioned on the home screen to locate schedule settings `dbconfig.xml` file and insert it into the app to avoid this error.



2. This is a warning message confirming whether user wants to replace the existing `dbconfig.xml` file.



5.2 Special Considerations

Please make sure you always use the backed up copy of schedule settings `dbconfig.xml` file. Do not insert the deployed version of `dbconfig.xml` into the app.

5.3 Support

1. In case you run into any issues, feel free to report them via email to **support@neocode.com**.
2. It is recommended that you include the zipped copy of `schedule_parser.fmp12` database file in the email to help us serve you better.
3. Direct link to Neocode contact page: <https://www.neocode.com/contact-us/>



6. References

1. FileMaker website: <https://www.filemaker.com/>
2. FileMaker Server 18 help: <https://fmhelp.filemaker.com/help/18/fms/en/>
3. FileMaker Pro 18 help <https://fmhelp.filemaker.com/help/18/fmp/en/>
4. Neocode website: <https://www.neocode.com/>
5. FileMaker Marketplace: <https://marketplace.filemaker.com/>